

em1 asbestos essentials

Non-licensed tasks

This information will help employers, including the self-employed, comply with the **Control of Asbestos Regulations 2006**, to control exposure and protect health.

It is also useful for trade union representatives.

Asbestos fibre causes lung cancer and lung diseases.

This sheet describes what to do if you find asbestos materials during a job.

It also applies where asbestos materials become damaged by accident.

Main points

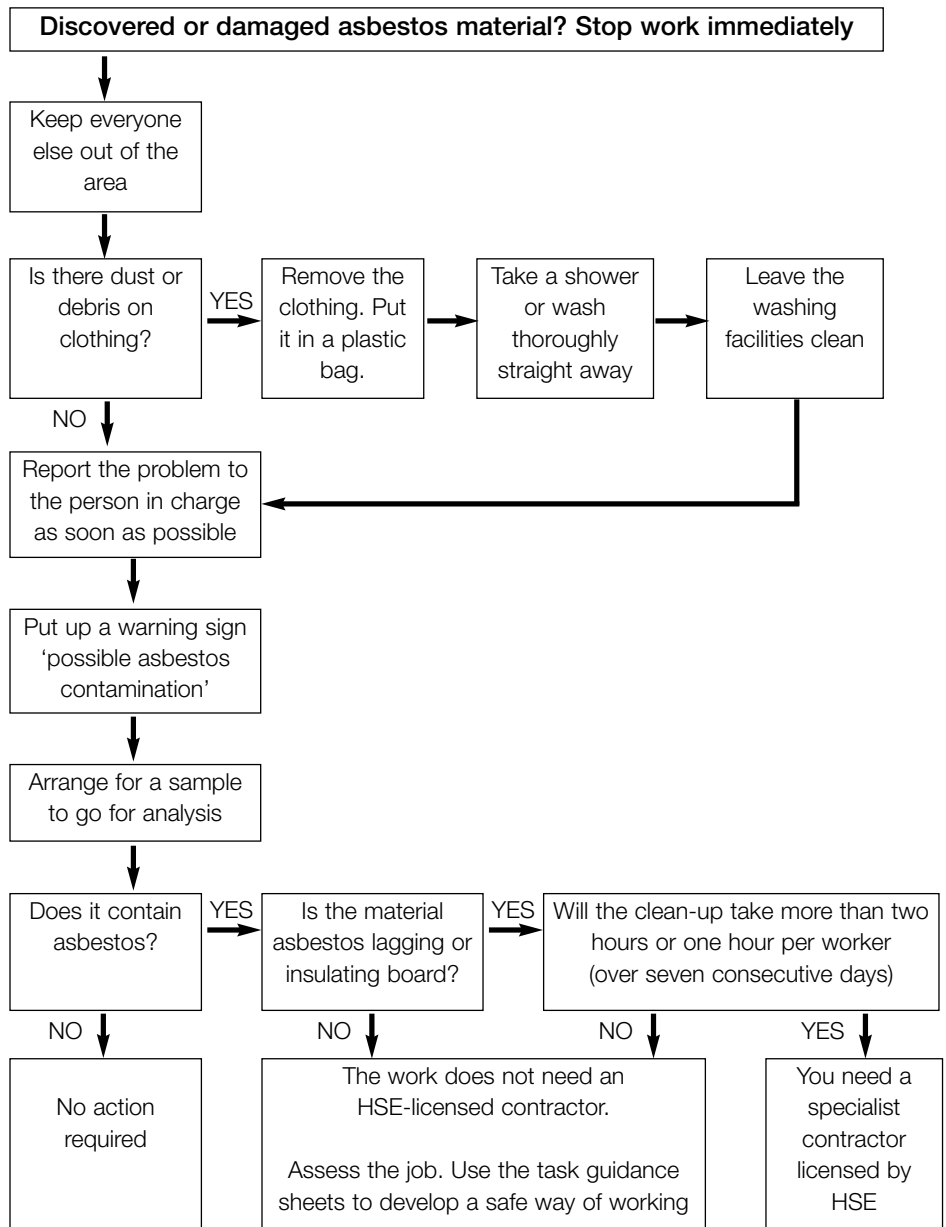
- Check it out before you start work.
- Read the safety checklist on the task sheet.

What to do if you uncover or damage asbestos materials

Equipment and method sheet

Procedures

- Stop work immediately.
- Decide who must do the work - you may need a licensed contractor.
- Minimise the spread of contamination to other areas.
- Keep exposures as low as you can.
- Clean up the contamination.
- Follow the chart below.



Useful links

- HSE's Infoline Tel: 0845 345 0055 Textphone: 0845 408 9577
e-mail: hse.infoline@natbrit.com.
- HSE priced and free publications are available from HSE Books
Tel: 01787 881165 Website: www.hsebooks.co.uk.

This document is available at www.hse.gov.uk/asbestos.htm

© *Crown copyright* This publication may be freely reproduced, except for advertising, endorsement or commercial purposes. First published as part of *Asbestos Essentials Task Manual* 2001. Please acknowledge the source as HSE.

Published by the Health and Safety Executive 09/06

This guidance is issued by the Health and Safety Executive. Following the guidance is not compulsory and you are free to take other action. But if you do follow the guidance you will normally be doing enough to comply with the law. Health and safety inspectors seek to secure compliance with the law and may refer to this guidance as illustrating good practice.